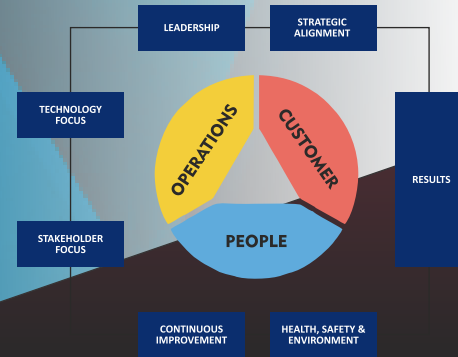


BE STAR RECOGNITIONS 2020

EMBRACE EXCELLENCE

Based on the CII IQ
Functional Assessment Framework
OPERATIONS | CUSTOMER | PEOPLE



Recognitions:
National Business Excellence Conclave
23 - 24 July 2020, Bengaluru

To Promote Excellence and to Recognize Organizations for



WHY TO PARTICIPATE & WHAT IS THE BENEFIT

- Get a comprehensive external perspective
- Measure the progress on the improvement journey
- Action Oriented feedback
- Compare with Best-in-Class Organisations
- Accelerate the improvement effort

EVALUATION PROCESS

- Assessment is based on CII-IQ Functional Excellence Framework
- **Non Document Based Assessment**
- On site Validation by a two member team
- Scoring on a 0-500 point scale covering relevant practices and results

* Man days can vary based on the size and complexity of the applicant.

ELIGIBILITY CRITERIA

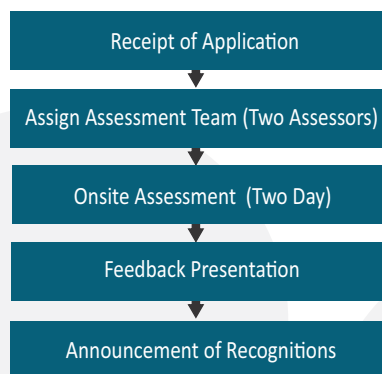
- All Organisations registered and operating in India
- Applicant must have been in Business for at least three years. (Open to all sectors)
- Minimum turnover of Rs 100 Crores in the recently concluded Financial Year

Note : If the applicant is an Operating unit/SBU of a large organisation, then the minimum turnover of the unit applying must be Rs 50 Crore

LEVELS OF RECOGNITION



ASSESSMENT PROCESS



APPLICATION FEE

Category	Fee in Year*
Upto 499 Cr.	INR 1,10,000
500 - 999 Cr.	INR 1,40,000
Above 1000 Cr.	INR 1,90,000

* Fee is for a single location/plant only
Contact the secretariat for multi location assessments

Boarding, Lodging & Travel expenses to be organized & Settled by the Applicant for the on-site visit by the Assessor.

PAST RECOGNITION WINNERS

ABB India Ltd., Blue Star Ltd., Buhler (India) Pvt. Ltd., Delhi International Airport, Endress + Hauser Flowtech (India) Pvt. Ltd., Exide Industries Ltd., Gujarat Borosil Ltd., IOCL, L & T - Sargent & Lundy Ltd., J.K.Fenner (India) Ltd., Kancor Ingredients Ltd., Kewaunee Scientific Corporation India Pvt. Ltd., Maithon Power Ltd., Marico Ltd., Murugappa Morgan Thermal Ceramics Ltd., Metalman Auto Pvt. Ltd., Minda Corporation Ltd, Mumbai International Airport, National Aluminium Company Ltd., NTPC Ltd., Pricol Ltd., Ramagundam Super Thermal Power Station, Tata Sponge Iron Ltd., Thriveni Earthmovers (P) Ltd. and many more.....

For details on the Assessment Framework, Criteria and the Application contact

K R Shivakumar
Principal Counsellor & Head
Business Excellence
k.r.shivakumar@cii.in
+91 9980565367

P M Krishnan
Principal Counsellor
Business Excellence
krishnan.pm@cii.in
+91 9632661888

M S Srinivasan
Senior Consultant
Business Excellence
ms.srinivasan@cii.in
+91 9620226100

Sudha S
Deputy Director
sudha.s@cii.in
+91 9886493998

